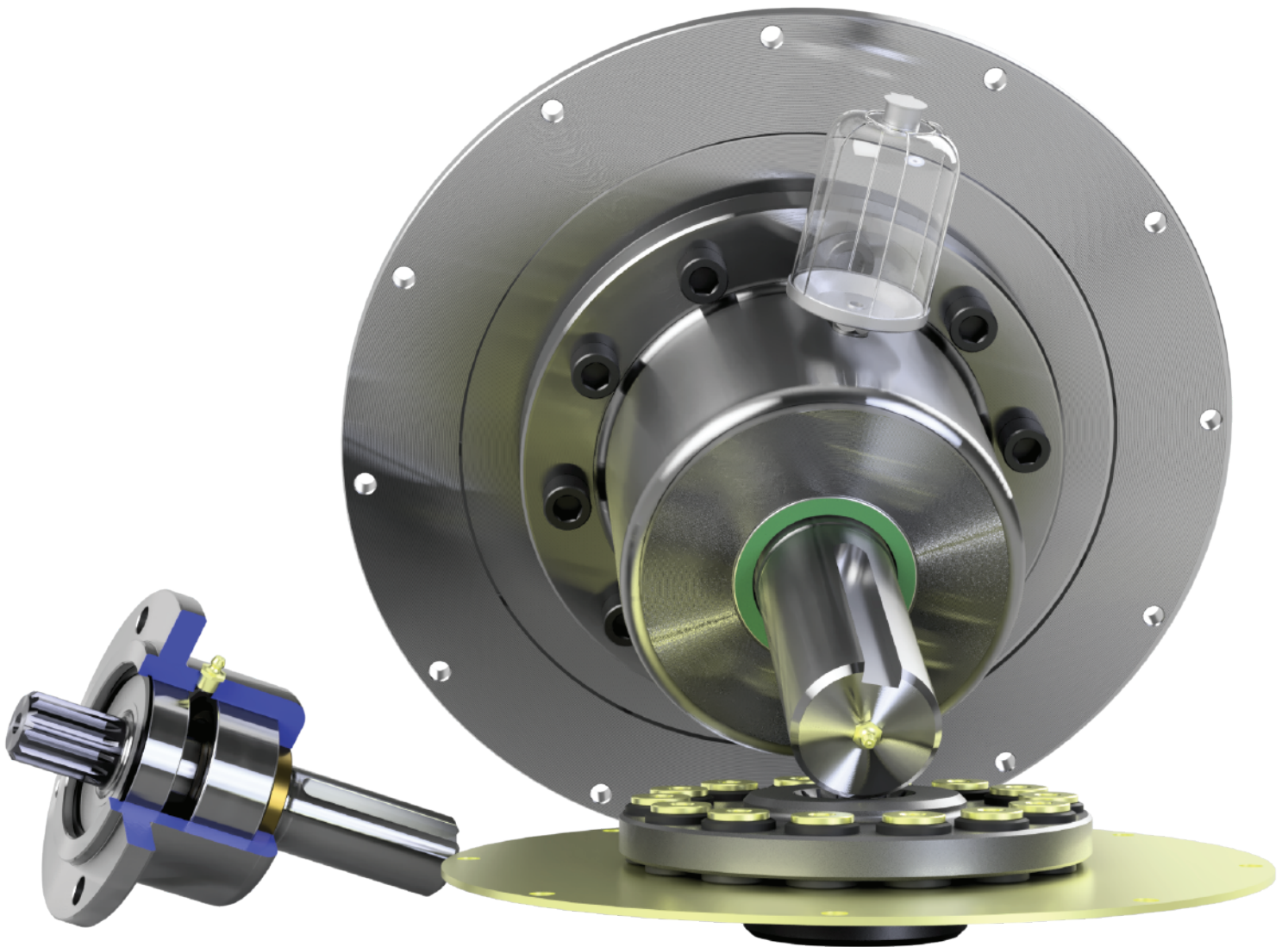


# BEARING SUPPORTED STUB SHAFTS



**Hayes Manufacturing, Inc.**

6875 US Highway 131

Fife Lake, MI 49633

Phone: 231-879-3372 | Fax: 231-879-4330

[www.hayescouplings.com](http://www.hayescouplings.com)

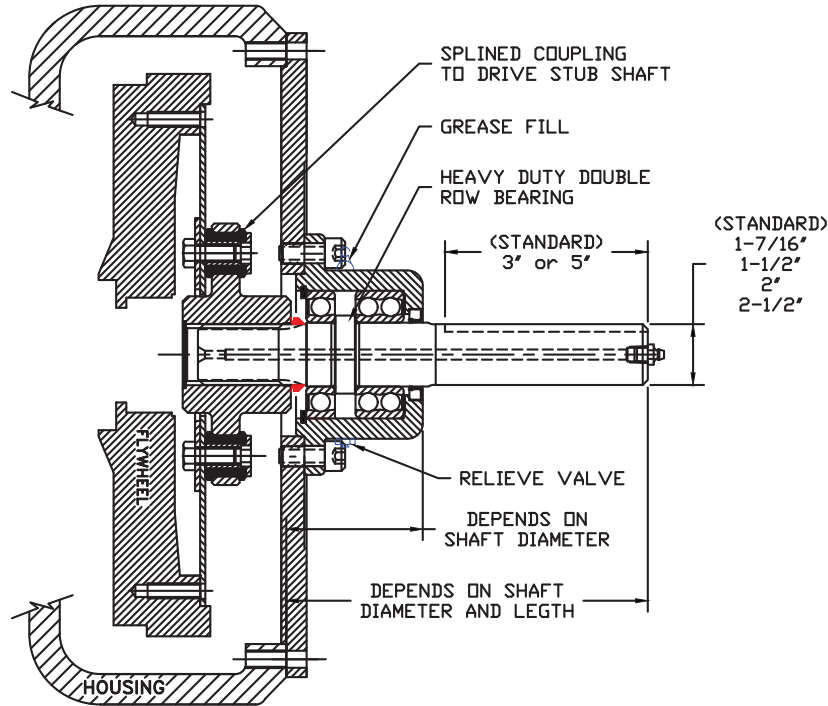
**HAYES**<sup>®</sup>

*We've Got Connections*

POWER  
TRANSMISSION  
PRODUCTS

## Bearing Supported Stub Shafts

### THE HAYES BEARING SUPPORTED STUB SHAFT ASSEMBLY IS SPECIFICALLY DESIGNED FOR SIDE LOAD APPLICATIONS



#### Specifications:

**Output:** Depends on your application for shaft size and length.

#### Ratings:

**Input Torque (max.):** 650 lb-ft

**Input / Output Speed:** 3000 rpm

**Power(Max.):** 350 HP

**Bearings:** 3 Years Continuous Running

The Hayes Stub Shaft design employs a single and double roll radial ball bearing designed for light and heavy-duty work, not to exceed side loads listed in tables 1 through 4. The bearings are self-contained in our specially designed housing that will keep the assembly free of contamination. Hayes Bearing Supported Stub Shafts come pre-mounted to your specific flywheel housing plate or custom Hayes housing. Along with the mounted bearing support, you will also receive a Hayes Flywheel Coupling that will be sized for your application to drive the bearing support sub-assembly.

We emphasize that the data contained herein should be used as a guide only. The tabulation is based on laboratory tests but does not take into account all variables that can be encountered in actual use. Therefore, it is advisable to test the material under actual service conditions before specification. If this is not practical, tests should be devised that simulate your service conditions as closely as possible.

**SEE FOLLOWING TABLES 1 THROUGH 4 FOR SIDE LOAD RATINGS**

## Bearing Supported Stub Shafts

**IMPORTANT:** If you have an application that you feel is not covered by this data Please Call to determine what Hayes can offer you. Remember these loads are calculated for 3 years of continuous running. If you are not running the unit 24 hours a day 7 days a week you may be able to have a higher load at higher RPM's.

Side Load Ratings For 1-7/16" Bearing Supported Stub Shaft (Tapped For Centrifugal Clutch)									
	Side Load 1000 lbs.	Side Load 1000 lbs.	Side Load 1000 lbs.	Side Load 1000 lbs.	Side Load 1000 lbs.	Side Load 950 lbs.	Side Load 910 lbs.	Side Load 870 lbs.	Side Load 810 lbs.
	500 rpm	800 rpm	1100 rpm	1400 rpm	1700 rpm	2000 rpm	2300 rpm	2600 rpm	3000 rpm
<b>Basic L-10 Life Hours</b>	91468	57168	41577	32667	26902	26671	26387	26712	28686

**TABLE 1**

Side Load Ratings For 1-1/2" Bearing Supported Stub Shaft									
	Side Load 1500 lbs.	Side Load 1240 lbs.	Side Load 1160 lbs.	Side Load 1075 lbs.	Side Load 1000 lbs.	Side Load 950 lbs.	Side Load 910 lbs.	Side Load 870 lbs.	Side Load 810 lbs.
	500 rpm	800 rpm	1100 rpm	1400 rpm	1700 rpm	2000 rpm	2300 rpm	2600 rpm	3000 rpm
<b>Basic L-10 Life Hours</b>	27102	29984	26636	26296	26902	26671	26387	26712	28686

**TABLE 2**

Side Load Ratings For 2" Bearing Supported Stub Shaft									
	Side Load 2600 lbs.	Side Load 2300 lbs.	Side Load 2175 lbs.	Side Load 2025 lbs.	Side Load 1900 lbs.	Side Load 1810 lbs.	Side Load 1740 lbs.	Side Load 1680 lbs.	Side Load 1580 lbs.
	500 rpm	800 rpm	1100 rpm	1400 rpm	1700 rpm	2000 rpm	2300 rpm	2600 rpm	3000 rpm
<b>Basic L-10 Life Hours</b>	31994	30091	26365	26287	26770	26750	26529	26380	28052

**TABLE 3**

Side Load Ratings For 2-1/2" Bearing Supported Stub Shaft									
	Side Load 4850 lbs.	Side Load 4250 lbs.	Side Load 3975 lbs.	Side Load 3650 lbs.	Side Load 3450 lbs.	Side Load 3250 lbs.	Side Load 3100 lbs.	Side Load 2980 lbs.	Side Load 2780 lbs.
	500 rpm	800 rpm	1100 rpm	1400 rpm	1700 rpm	2000 rpm	2300 rpm	2600 rpm	3000 rpm
<b>Basic L-10 Life Hours</b>	32314	30014	26679	27075	26404	26847	26901	26789	28597

**TABLE 4**